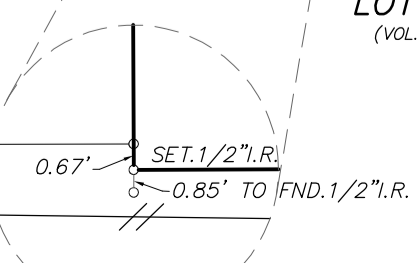
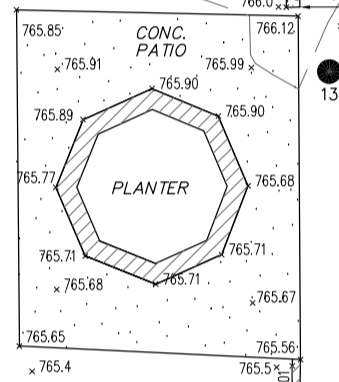
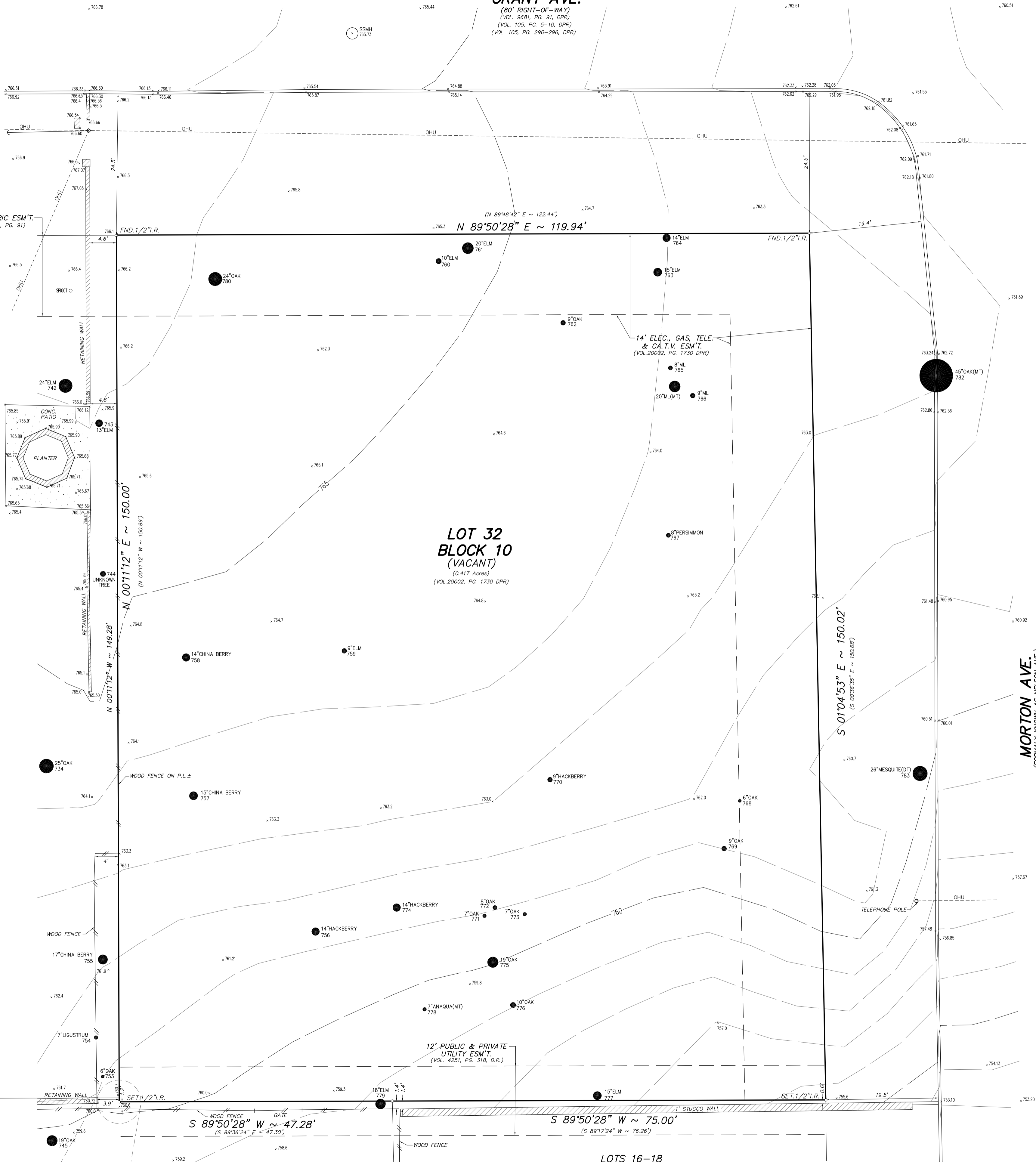


GRANT AVE.
(80' RIGHT-OF-WAY)
(VOL. 9681, PG. 91, DPR)
(VOL. 105, PG. 5-10, DPR)
(VOL. 105, PG. 290-296, DPR)

**LOT 33
BLOCK 10**
(VOL. 20002, PG. 1730 DPR)

**LOT 32
BLOCK 10
(VACANT)**
(0.417 Acres)
(VOL. 20002, PG. 1730 DPR)

MORTON AVE.
(FORMERLY KNOWN AS NELSON AVE.)
(60' RIGHT-OF-WAY)
(VOL. 9681, PG. 91, DPR)
(VOL. 105, PG. 5-10, DPR)
(VOL. 105, PG. 290-296, DPR)



LOT 34, BLOCK 10
(VOL. 20002, PG. 1730 DPR)

**LOTS 16-18
BLOCK 10**
(VOL. 9041, PG. 1043, RPR)